



# **EVALUATION REPORT**

*Program for Emergency Seed support (PESS) project in*

**Wag Himra Zone of Amhara Region**

**Submitted to**

**Food for the Hungry (FH)**

*Karamara Consultancy Service*  
Samuel Lemma  
+251 911 455938; +251 922 785412; +251 984 000804  
**Website:** <http://www.karamaraconsultancy.com>  
**Email:** karamara.cs@outlook.com;  
karamara.cs@gmail.com  
**P.O. Box** 4674, Addis Ababa,

**February 2021**  
**Addis Ababa**

## **Contents**

ACKNOWLEDGMENT.....	iv
ACRONYMS.....	v
EXECUTIVE SUMMARY.....	vi
1. INTRODUCTION.....	1
2. PURPOSE AND OBJECTIVES OF THE EVALUATION.....	3
2.1 Purpose and general objectives of the Evaluation.....	3
2.2 Specific Objectives:.....	3
3. SCOPE OF THE EVALUATION.....	3
3.1 Programme Focus.....	3
3.2 Geographical Focus.....	3
4. EVALUATION APPROACH AND METHODOLOGY.....	5
4.1 Study Design.....	5
4.2 Sampling Techniques.....	5
4.2.1 Sampling for quantitative data collection – Beneficiary’s Survey.....	5
4.2.2 Sampling for qualitative data collection.....	6
4.3 Data source mapping.....	6
4.4 Data collection instruments.....	8
4.5 Data Management and Administration.....	8
4.5.1 Recruitment and Training for Data Collection.....	8
4.5.2 Data Entry, Analysis and Quality Control.....	9
5. EVALUATION FINDINGS.....	10
5.1 Demographic Characteristics.....	10
5.2 PESS project performance towards objectives and set Indicators.....	10
5.3 PESS Project Performance towards Evaluations Criteria.....	15
5.3.1 Relevance.....	15
5.3.2 Effectiveness.....	16
5.3.3 Efficiency.....	17
5.3.4 Impact.....	17
5.3.5 Sustainability.....	18
5.3.6 Integration, synergy and complementarities.....	19
5.3.7 Cross Cutting Issues.....	19
6. CONCLUSION AND RECOMMENDATIONS.....	21
6.1 Conclusion.....	21
6.2 Recommendations.....	22
7. ANNEXES.....	24

## Figures

Figure 1 Study Woredas with number of Survey sample size, and FGD, KII and Case Study	4
Figure 2 Food Self-sufficiency .....	11
Figure 3 Figure 3 Number of months of HH food self-sufficiency as a result of seed system security programming .....	11
Figure 4 Percentage of HHs with access to sufficient seed to plant .....	13
Figure 5 Previous and Current Year's Average Crop Production by Woreda .....	15
Figure 6 Scores of evaluation criteria .....	20

## Tables

Table 1 Table 2 Household Participation per Target Woredas .....	6
Table 2 List of Participants of KII .....	7
Table 3 Number of FGD by Woreda and Kebele .....	7
Table 4 Demographic Information of Interviewed Households. ....	10
Table 5 Major Types of Vulnerability of Household Head .....	10
Table 6 Summary of findings vs. baseline and Target by indicators .....	15
Table 7 Comparison of Crop Seed Purchase Plan vs Accomplishment .....	17
Table 8 Evaluation criteria of measurements.....	19

## **ACKNOWLEDGMENT**

The evaluation team would like to extend its most sincere thanks to the community members of sample kebeles and the government line offices of Wag Hemra Zone for their active participation and relevant inputs.

The team also extends its heart-felt thanks to Food for the Hungry (FH), especially to the team members of Wag Hemira Program for Emergency Seed support (PESS) project and the Head Office who supported this evaluation process regardless of all the inconveniences and the additional burden. Particularly, our special thanks and sincere appreciation goes to EshetuAnito, TilahunGebbru and HakuJemal for their unreserved support throughout the evaluation process.

## ACRONYMS

ACF	Action against Hunger
AGFS	Agriculture and Food Security
CMDRR	Community Managed Disaster Risk Reduction
DAC/OECD	OECD Development Assistance Committee (DAC)
DFSA	Development Food Security Activity
DRR	Disaster Risk Reduction
FGD	Focus Group Discussion
FH	Food for the Hungry, Inc.
FHE	Food for the Hungry Ethiopia
FHH	Female Headed Households
KCS	Karamara Consultancy Service
KII	Key informant interview
JEOP	Joint Emergency Operations Plan
NGO	Non-governmental Organization
PESS	Program for Emergency Seed Support
PSNP	Productive Safety Net Program
QT	Quintals
RNA	Rapid Needs Assessment
ToR	Term of Reference
USAID/BHA	USAID's Bureau for Humanitarian Assistance (BHA)

## EXECUTIVE SUMMARY

A USAID/BHA funded project named Program for Emergency Seed Support (PESS) has been implemented by Food for the Hungry (FH) as of June 8, 2020 and proceeded up to the end of January 2021. This is an emergency support project designed to ensure food security and build resilience among the communities in the 8 woredas of Wag Himra zone. FH targeted Kebeles by providing seed to farmers who, because they had lost crops in the previous season's drought, did not have it in the 2020 cropping season. The main goal/objective of the project is to improve food security of the vulnerable disaster affected farming households, building their resilience and enhancing early recovery.

As per the TOR, the purpose of the evaluation is to determine the relevance, efficiency, effectiveness, impact and sustainability of the FHE Program for Emergency Seed Support (PESS) project interventions and the progress made towards achieving the planned activities that have been implemented since June 2020 in SekotaZuria, Sekota town, Sahila, Dehana, Ziquala, Tsagbiji, Gazgibla and AbergeleWoreda of Wag Himra administration Zone, Amhara regional state.

The evaluation used both quantitative household survey with a sample size of 288 households (in Sekota Town, SekotaZuria, Ziquala, Gazgibla and DahanaWoredas) and qualitative data collection through conducting 10 key informant interviews with relevant partner government offices including Agriculture office; Early Warning/DRR management Office and Key Informant Interviews (KIIs) with PESS project implementing staff. Focus Group Discussions (FGDs) were conducted with women and men beneficiaries at selected sample Kebeles. In addition case studies were done with sample beneficiaries of women and men targets to provide personal data on *the context of the beneficiary before project intervention and demonstrate the contribution of the project.*

The expected Results of the project were the following:

1. Result 1- increased food self-sufficiency months of beneficiaries from 5 months to 7 months.
2. Result 2- increased number of people directly benefiting from seed systems/agricultural input activities (measured in terms of sex and age).
3. Result 3- Increased percentage of households with access to sufficient seed to plant.
4. Result 4- Increased production of major agricultural crops from seeds distributed to target households by 37% from the baseline as a result of the project.

## **2. Knowledge of PESS Project Objectives and Intervention Areas**

FGDs conducted with men and women beneficiaries have demonstrated that the project objectives and implementation strategies of PESS were clearly communicated and understood by the target groups and the government development agents at kebele levels. Staff of the FH implementing office had also clearly understood their roles and closely followed-up the seed provisions process.

## **3. Participation of Stakeholders at Various Stages of Project Cycle**

The relevant document review, FGD and KIIs conducted have shown that the project design and implementation of the PESS project was jointly undertaken with a full participation of project stakeholders like Kebele level community representatives, and Zonal and woreda government Departments of agriculture, Disaster Risk Reduction and Food Security, and Administration, Finance and economic Cooperative. Moreover, it was observed that the participation of partners at different phases of the project cycle was satisfactory and well-coordinated. It was also noted that kebele development agents of agriculture and experts from woreda agriculture offices participated in selection and training of beneficiaries.

# 1. INTRODUCTION

Ethiopia is characterized by chronic food insecurity. Drought, fragmented landholdings, severe environmental degradation and conflict are the main factors that have exacerbated the problem of food production, distribution and access. This has forced communities to rely on a combination of wage labor, sale of livestock, and food aid to make up their household food basket deficit, at best.

Sustainable food security requires availability of food or sufficient food production. Access to food and ability to purchase food are also prior conditions to ensure sustainable food security (Helland and Sörbö, 2014). Threats to food security include limited supplies of nutritious and safe foods and limited purchasing powers (Bazerghi et al., 2016). Wag Himra Zone, as other parts of Ethiopia, is affected by unsustainable food security.

To address this issue, Food for the Hungry Ethiopia (FHE) has been implementing PESS in Wag Himra Zone. Wag Himra Zone stands first among the four severely drought affected zones (Wag Himera, North Wollo, Central and North Gondar) identified in the Amhara regional state. The zone is known for erratic rainfall, recurrent drought, fragmented landholdings and severe environmental degradation that constrain agricultural production. Food shortage and malnutrition have long been a defining characteristic of Wag Himra Zone, even in a relatively normal cropping season. The impact of the 2020 season drought related to the late onset and early cessation of the 2019 Meher rain was more pronounced in Wag Himra Zone mainly due to high vulnerability of the communities in the administrative zone. The negative effects of the drought evident in all eight Woredas, as many households have already lost most of their assets. The crisis led to a rapid increase in the number of people in need of emergency food assistance.

The COVID-19 crisis has worsened the already dire situation with the lockdown in Ethiopia. Overall, the number of people receiving emergency food aid in the Wag Himra Zone from the USAID-funded JEOP through FHE drastically increased from 94,836 at the end of 2019 to 249,162 in January 2020. Those in need of food assistance constitute about 45% of the total population (556,305) of Wag Himra Zone. Of the 136 kebeles in Wag Himera, the severely affected households are concentrated in 83 kebeles. These 83 kebeles are located in the eight priority-one hotspot Woredas (Sahila, Ziquala, Abergele, Sekota, Tsagibji, Dahana, Gazgibila and Sekota towns and rural villages).

In addition to natural and environmental shocks that have impacted the livelihood of different social groups, women's multiple obligations, and the current COVID-19 restrictions on mobility and social engagements, participation in income generation opportunities have been constrained. Thus, women are vulnerable when food is scarce in households. According to FH's Rapid Needs Assessment, about 53% of the planted crops completely withered and failed due to drought and moisture stress. Most of the drought-affected households lost their entire crops and suffered from lack of food and crop seeds for the 2019/20 planting season. The drought also caused a shortage of water for human consumption. These vulnerable households did not have the basic assets, cash or access to financial services to buy the required seeds. According to Wag Himra Zone Disaster Risk Reduction and Food Security Department official report, the total number of drought affected people in need of support was 195,387 (35% of the total population) which illuminates the severity of the problems.

## **1.1 Background of the program**

A USAID/BHA funded project named PESS has been implemented by the Food for the Hungry (FH) as of June 8, 2020 and will proceed up to the end of January 2021. This is an emergency support project designed to ensure food security and build resilience of communities in the target Kebeles by providing seed to the farmers who did not have seed for planting in the 2020 cropping season because they lost their crops due to drought in the previous cropping season.

This agriculture and food security project was designed with the objective of creating access to seed for 28,746 farmers in the eight Woredas of Wag Himra zone. Moreover, the project was designed to attain the following results:

- 1. Result 1-** increased food self-sufficiency months of beneficiaries from 5 months to 7 months.
- 2. Result 2-** increased number of people directly benefiting from seed systems/agricultural input activities (measured in terms of sex and age).
- 3. Result 3-** Increased percentage of households with access to sufficient seed to plant.
- 4. Result 4-** Increased production of major agricultural crops from seeds distributed to target households by 37% from the baseline as a result of the project.

## **2. PURPOSE AND OBJECTIVES OF THE EVALUATION**

### **2.1 Purpose and general objectives of the Evaluation**

The purpose of the evaluation is to determine the relevance, efficiency, effectiveness, impact and sustainability of the FHE PESS project interventions and the progress made towards achieving the planned activities. The results of this evaluation will contribute to a culture of learning and evidence-based decision making, improve the quality of future programs in FH Ethiopia, and increase the knowledge base of USAID.

### **2.2 Specific Objectives:**

More specifically, the evaluation will focus on addressing the following core areas:

- i.To provide an independent assessment of progress achieved in the PESS project and identify key factors that negatively or positively affected the project performance;
- ii.To identify challenges encountered during implementation of the program and draw lessons learned and best practices ;
- iii.To provide insights on the extent to which outcomes were achieved with PESS project;
- iv.To provide evidence on synergy in partnership, sustainability and cross cutting issues including impacts achieved.

The final evaluation was guided by the program framework and its indicators. The evaluation will provide evidence of progress towards achieving the indicators in the program framework and assess best practices to scale up and what did not go well.

## **3. SCOPE OF THE EVALUATION**

### **3.1 Programme Focus**

The evaluation process has focused directly on beneficiaries of the project, men and women mainly on the outcome indicators. The evaluation also looked into cross-cutting issues such as inclusion of people with disabilities, participation of women and youth, and gender equality.

### **3.2 Geographical Focus**

Geographically, the final evaluation covered the achievement of the project to date in five of the eight woredas of Wag Himra administration zone, Amhara Regional State, where the project has been implemented. These are Sekota, Sekota Zuria, Zequala, Dehana and Gaz Gibla woredas (See fig 1). The three woredas namely Sehala, Abergele and Tsagibji were excluded from the study due to accessibility and the current security situation.

# Study Site

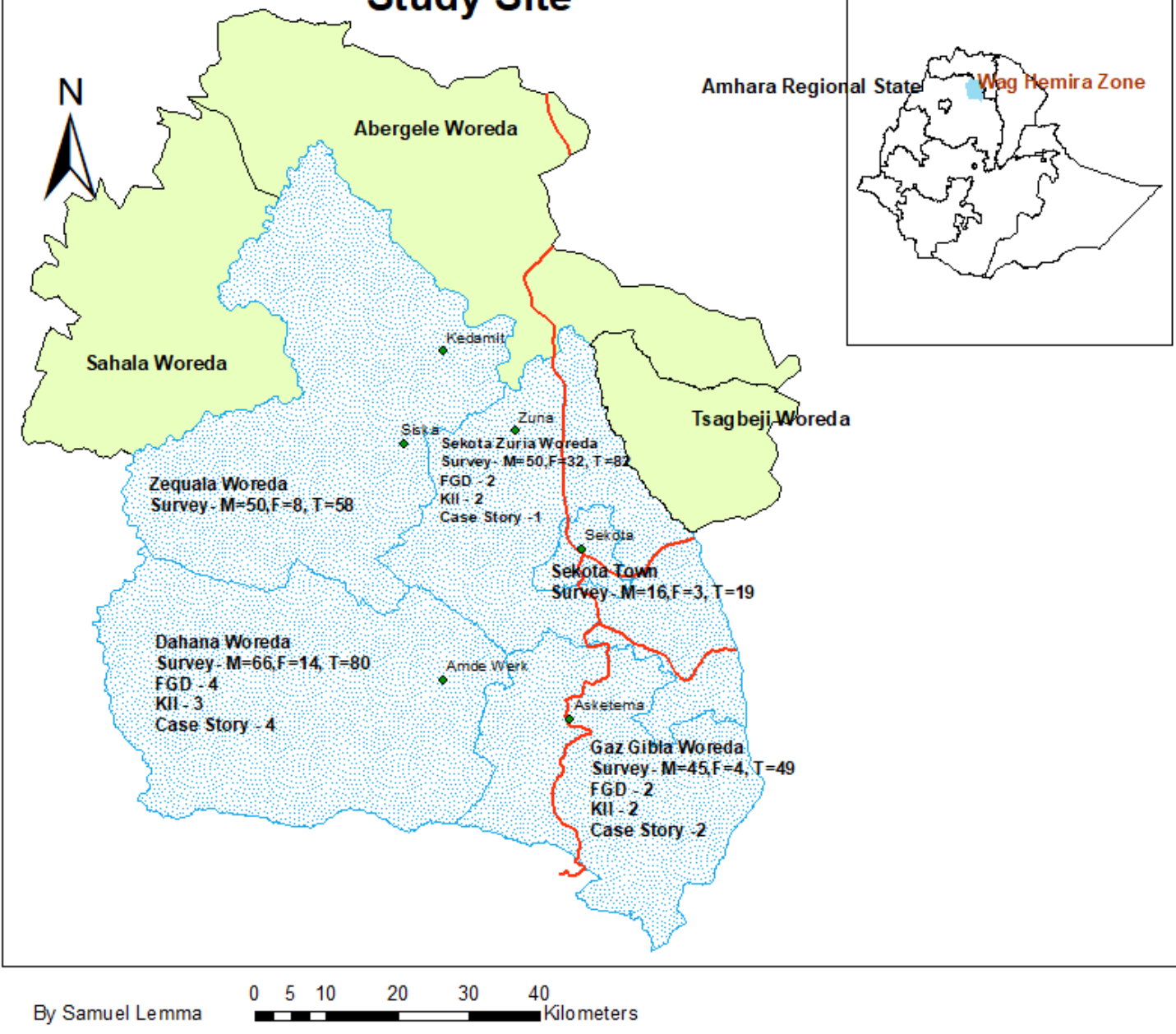


Figure 1 Study Woredas with number of Survey sample size, and FGD, KII and Case Study

## **4. EVALUATION APPROACH AND METHODOLOGY**

The evaluation process has systematically integrated analytical frameworks of the evaluation criteria (relevance, effectiveness, efficiency, impact and sustainability). There was also verification, analysis and assessment of the integration, complementarities and impact of cross cutting and inclusion issues within the project interventions.

The study employed a mixed methodology to conduct this endline assessment.

### **4.1 Study Design**

The evaluation employed the pre-experimental evaluation design. This pre-experimental design involved a pre- and post-intervention involving collecting information only from the program participants. In addition, the project also employed a desk review methodology to review the project update reports supported by some qualitative data to see trends in achievements of project results which have been verified by the findings of this endline evaluation. For this final evaluation case studies and desk reviews of project documents are employed to measure the changes brought as a result of the project intervention.

### **4.2 Sampling Techniques**

In determining a suitable sample size for individuals to be included in the quantitative aspect of the survey, the following statement is considered.

- A sample size that is adequate to provide stable estimates; and
- The number of households for the household survey was calculated applying an accepted sample size determination model, a formula to calculate sample size from a finite population. Statistically significant household sample was selected in the target districts distributed proportionally, employing random selection methodology, which is using three stages and by applying systematic random sampling covering the intervention woredas and kebeles.

Both probabilistic and non-probability sampling procedures were applied based on the nature of samples as it had been used during baseline study time. The sample groups are survey respondents, FGDs, KIIs and individual in-depth interviews.

#### **4.2.1 Sampling for quantitative data collection – Beneficiary’s Survey**

For the survey the sampling unit was households who are beneficiaries of the project.

Woredas and Kebeles were selected systematically based on the current security situation of the area and accessibility as criteria agreed with project staff at the study site.

A total of 288 sample households were selected and interviewed for this final evaluation. Systematic random sampling technique was applied to select specific household respondents. These 288 samples were distributed proportional to sampling frame both at woreda and Kebele levels.

#### 4.2.2 Sampling for qualitative data collection

Participants of FGD, KII and Case study were selected purposefully.

#### 4.3 Data source mapping

There were different ways to capture necessary and relevant information as per the Project Results Framework and Project Baseline.

- **Beneficiary Survey:** Beneficiary survey was conducted to measure the progress against the indicators. In addition to measuring the indicators, the survey instrument also included the post distribution monitoring questions to collect and understand beneficiaries' feedback on the quality, sufficiency, utilization and effectiveness of the assistance provided to them by the project. This feedback will help in the design of future programs. The sampling units are farmers randomly selected among those who had received the seed. The seed distribution list served as a sampling frame. Table 1 shows number of households (HHs) who participated in the survey by sex and woreda.

Table 1 Table 2 Household Participation per Target Woredas

Target Woreda	Sample size	Men	Women
Dahana	80	66	14
Gazgibila	49	45	4
Sekota Town	19	16	3
SekotaZuria	82	50	32
Ziquala	58	50	8
<b>Total</b>	<b>288</b>	<b>227</b>	<b>61</b>

- **Key Informant Interview:** A total of ten KIIs were conducted with representatives from Crop Development and Management Department – Woreda Agriculture Office, Early Warning and DRR Department - Woreda Agriculture Office, and Kebele Development Agents, project office (See Table 2)

Table 2 List of Participants of KII

Participants/target group	Name of Sample Woreda&Kebele	Number of participants
Agriculture Office – crop expert & team leader	▪ SekotaZuria ▪ Dehana ▪ GazGibla	3
Agriculture Office – EW expert	▪ SekotaZuria ▪ Dehana ▪ GazGibla	3
Development Agent	▪ Lay Saida/025 Kebele ▪ Gakiu/015 kebeles ▪ Chilla/022	2
Projects staff at field office	▪ Sekota	1
Projects staff at Head office	▪ Addis Ababa	1
<b>Total</b>		<b>10</b>

- **Focus Group Discussion (FGDs):** FGD was conducted with male and female farmers. A total of eight FGDs were conducted in four Kebeles of SekotaZuria, GazGibla and DahanaWoredas (See table 3). The plan was to conduct in four Woredas, but due to the problem of accessibility in terms of the current security situation and holiday week it was not possible to conduct FGD and KII in the fourth woreda.

Table 3 Number of FGD by Woreda and Kebele

No .	Participants/target group	Name of Sample Woreda&Kebele	Number of FGD
1	Men beneficiaries	▪ SekotaZuria (Lay Saida/025 Kebele) ▪ Dehana (Gakiu/015 &Chilla/022 kebeles) ▪ GazGibla (DebreWoila/02 kebele)	4
2	Women beneficiaries	▪ SekotaZuria (Lay Saida/025 Kebele) ▪ Dehana (Gakiu/015 &Chilla/022 kebeles) ▪ GazGibla (DebreWoila/02 kebele)	4
	<b>Total</b>		<b>8</b>

FGD with Leaders and experts from Kebele, Woreda Agricultural / DRR office and elders could not be conducted as planned due to unforeseen situations from government offices.

- **Document Review for secondary data collection**
  - **Secondary Data Sources:** Government records such as Meher season Crop Assessment Reports and Crop production Reports from Wag Hemra Zone Agriculture office was collected.
  - **Primary Data Collection Sources:** Project records such as seed distribution forms, master beneficiary list and periodic reports were the major primary data sources for

the final evaluation. Master beneficiary list was used to select sample households for survey.

- **Case Studies:** To substantiate the survey findings and compare the pattern of change and effectiveness of the project results, case studies were conducted in selecting two high performing and two underperforming kebeles in four of the eight operational woredas of PESS. A total of seven case studies were conducted. The case study used an in-depth interview methodology exploring the situation of the families prior to the project and after the project. The in depth interviews explored how the life of these beneficiaries have been impacted by this project and what has changed as the results of these interventions. The case studies have then been compared to look for patterns, emerging themes or any differences to understand the positive or negative impact of the project. Female headed households and other vulnerable beneficiaries were intentionally included in the case studies.
  
- **Direct Observation:** While conducting the case studies, evaluation team members made direct observations of the crop harvest. The evaluation team members used the necessary personal protective equipment (PPE) including facemasks and hand sanitizers throughout the period of evaluation. Social distancing principles have also been strictly practiced at all times to safeguard all concerned from the pandemic.

#### **4.4 Data collection instruments**

Data were collected using different instruments and tools listed below (See annex).

- Structured Questionnaires - Beneficiary Survey
- FGDs
- KII
- Case Stories –Most Significant Change
- Review of Secondary Sources of Data
- Observation

#### **4.5 Data Management and Administration**

##### **4.5.1 Recruitment and Training for Data Collection**

Data collectors were recruited from different Woredas of Wag Himra Zone who knew the culture and languages of the surveyed community. While the consultants administered FGDs, KIIs and case stories, data collectors administered the structured questionnaires.

A one day training was provided to data collectors and a pilot survey was conducted to test the questionnaire before starting the actual data collections. The survey was conducted using a mobile based data collection tool called ODK. Survey data collection was conducted from January 4 – 6, 2021 while FGDs, KIIs and case stories continued until January 8, 2021.

## **4.5.2 Data Entry, Analysis and Quality Control**

### **Data Entry**

The household survey data were stored in a database online while the data collectors completed questionnaires for each household. Quality checking and follow up of the data collection was conducted online as the data collectors used digital data collection tools. One of the advantages of collecting data using mobile based applications is to ensure data quality. Quality checking and follow up of the data collection was conducted during each data collection time. Household survey data were collected using a digital data collection tool. This digital data collection enabled to see and track sampled household's information and location online so that enumerators made corrections before they left the data collection site.

### **Data Analysis**

#### ***Quantitative data analysis***

Quantitative data was analyzed using SPSS. The analysis systematically processed the following statistical analyses:

- *Descriptive statistics*: summary statistics that describe the characteristics of the data set
- *Indicator calculations*: endline evaluation versus baseline values for every indicator.

#### ***Qualitative data analysis***

Analysis of qualitative data was conducted using content/thematic analysis alongside identification parameters for the qualitative analysis.

## 5. EVALUATION FINDINGS

### 5.1 Demographic Characteristics

The result showed that the average family size of the five woredas was 5. The average agricultural land size of a household was 0.9 hectare (see Table - 4.) Detail disaggregated data by Woreda is annexed with this report.

Table 4 Demographic Information of Interviewed Households.

Statistics	HHH Age	Family Size	Female Family Size	Male Family Size	Hectare for farming
Mean	43	5	2	2	0.9
Minimum	22	1	0	0	0.3
Maximum	75	11	7	6	12.5

Source: Household Survey

With regard to vulnerability of household heads, 37.5% of interviewed households have responded that they have major types of vulnerability (See table 5).

Table 5 Major Types of Vulnerability of Household Head

Type of major vulnerability of HHH	Frequency	Percent
Critically ill/ chronically sick	11	3.8
Elderly	58	20.1
Female Headed	30	10.4
No major vulnerability	180	62.5
People with disability	9	3.1
<b>Total</b>	<b>288</b>	<b>100.0</b>

Source: Household Survey

### 5.2 PESS project performance towards objectives and set Indicators

In assessing the level of physical achievement of the program, primary reference was made to the planning matrix (framework) of the project document. Under this section, changes brought so far are compared with baseline survey.

- 1. Result 1-** increased food self-sufficiency months of beneficiaries from 5 months to 7 months.

Survey results show that 71% of HHs reported that they are food self-sufficient (See Fig. 2).

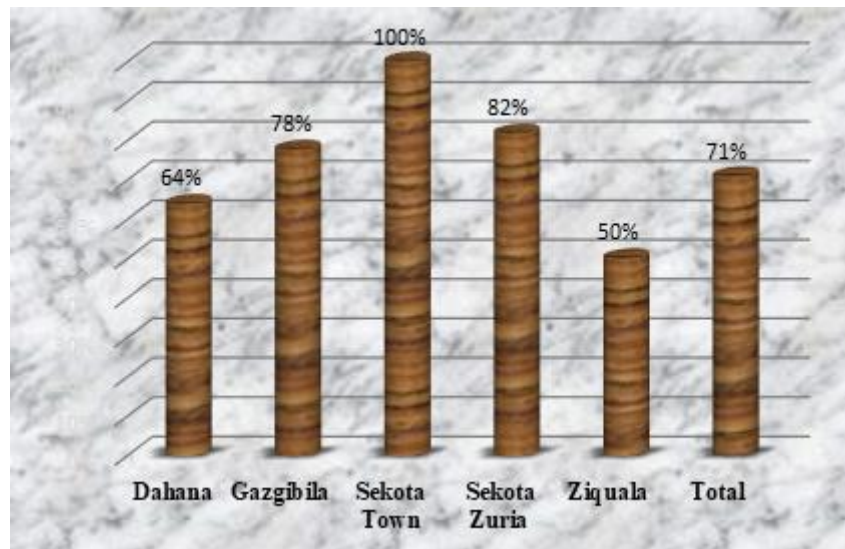


Figure 2 Food Self-sufficiency  
Source: Household Survey

The report shows that HH would be food self-sufficiency for 6.3 months as a result of seed system security programming. The project achieved 90% of its target in creating food self-sufficiency. There is a difference of 0.7 from the target which was 7 months. These months reported as self-sufficient were January, February, March, October, November and December. However, the months of self-sufficiency months are not the same and vary with the weredas. Gazgibila households expected over nine months while Sekota Town and Sekota Zuria Woredas have months of 4.1 and 4.7 months respectively (See Fig. 3).

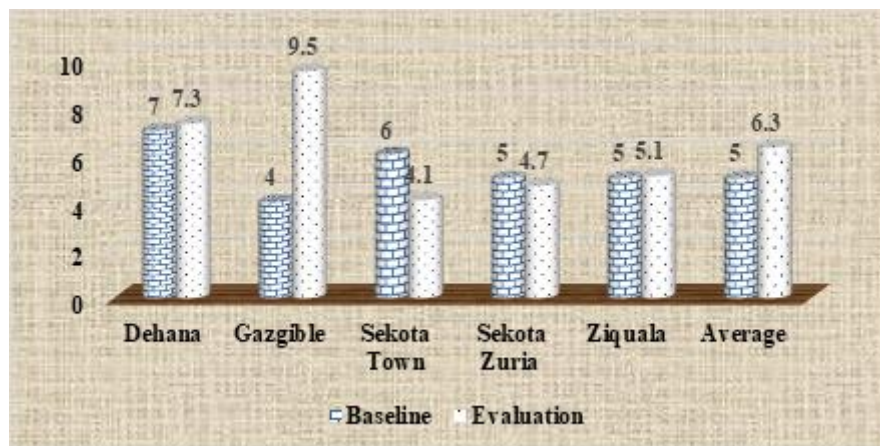


Figure 3 Figure 3 Number of months of HH food self-sufficiency as a result of seed system security programming  
Source: Household Survey

The decline in Sekota Town and Sekota Zuria Woredas might be associated with a tendency of providing inaccurate information which is related to giving back of seed to the government (seed bank). Government collects some amount of seed to its seed bank so that it can be distributed for the next crop season.

## Case Study - LayishGebru and family became food secured through improved seeds.

Layish Gebru (42) and her husband Terfe Gebreyesus (60) live in Sekota Zuria Woreda with their four kids which included three girls and a boy for 44 years. Tamir Terfe, (18) and female in grade 10, Ambel Terfe, female and 12 years old in grade 8, Abrham Terf, a year and half, male Menbre Moges, 22 and female. The family depends on harvest from two patches of 0.25 hectares of land on which they farm two different types of grain including wheat and teff which are the two major staple foods in the area.

Over the last several decades the family was buying teff and wheat seeds by taking periodic loans from a local savings and credit association which they had to repay right after the harvest season.

Over the last 8 months, Food for the Hungry Ethiopia launched an improved seeds distribution project in partnership with USAID that targeted selected poor farmers in 8 woredas of Wag Humera Zone with the objective of increasing the agricultural productivity and food security of the most vulnerable farmers in the zone.

Prior to the intervention of the project, Layish and her husband who happened to travel to Sekota on the day of the interview had to borrow money from local savings and credit schemes with an exorbitant interest. Speaking of how the family used to obtain grain seeds in the past, Layish said

*“We repay our loan with a 19% interest rate which is a very high repayment rate for us but the project provided us with improved seeds free of any charge. My family received 37.5 kg of improved seeds of wheat and 6.25kg of teff seed. The market price of the wheat seeds we received amounted to Birr 657.50 for 37.5 kg of seed. After sowing teff, we got 1 quintal of teff with a market price of Birr 3,000.”*

Layish continued, *“besides being food self-sufficient for more than 8 months of the year, my family managed to set aside enough improved seeds of wheat and teff for the next farming season and we do not need to borrow money or seeds from credit and saving association or from the local agricultural office”*

Layish mentioned the challenges that her community faces due to erratic and untimely rain which resulted in waterlogging on the fields reducing the productivity of the fields.

She said, *“Had it not been for the challenge from waterlogging on the fields, we could have harvested up to 6 quintals. She added the project also helped her family to save Birr 897.50 which the family could have expended for the purchase of seeds.”*

Layish finally added, *“The project conducted by Food for the Hungry Ethiopia saved us from recurrent loans for seeds and over the next several years, we hope that everything will be fine and we are deeply grateful for the support we have received from the project.”* She is optimistic about the next farming season with even better harvest



**2. Result 2-** increased number of people directly benefiting from seed systems/agricultural input activities (measured in terms of sex and age).

Results from an internal report for the second indicator “number of people directly benefiting from seed systems/agricultural input activities” shows that 7,765.2 Qts of seed distributed addressing total population of 144,069 (74,211 Male and 69,858 females). The target was to address a total 144,069 of people (Male: 74,211, Female: 69,858).

**3. Result 3-** Increased percentage of households with access to sufficient seed to plant.

Household survey results show that 58% of households had access to sufficient seed to plant. The figure is different between the targeted Woredas. Households in Sekota Town (84.2%) had the highest access to sufficient seed to plant which is greater than the average. The achievement is lower by 42% than the target. The target was to create access to sufficient seed to plant by all targeted households (100%) (See Fig. 4). The target statement that used the word “sufficient” was not clearly defined. FHE's target was to support seed covering arable land of 0.5 ha per household. However, the survey result shows that the average land holding of households is 0.9 ha which is bigger than the plan. For this reason, 42% of farmers responded that they did not have sufficient seed to plant.

Participants of FGDs and KIIs informed that there were problems with targeting. Targets were selected by kebele administrations, but seed was provided to non-target groups that included couples, Government employees, agricultural development agents, members of woreda police department, etc.

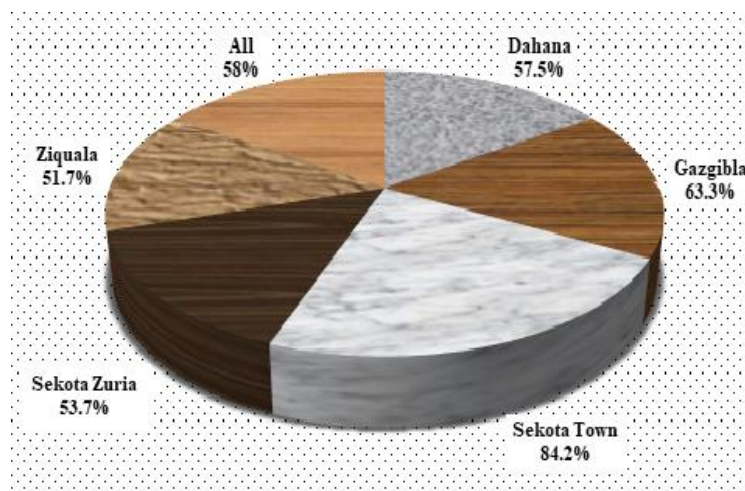


Figure 4 Percentage of HHs with access to sufficient seed to plant  
Source: Household Survey

The result from the study shows that farmers averagely have sown 12.2 kg *teff* which is 50% of the required *teff* crop and 74% of *teff* crop for their land designated for *teff*. The amount of *teff* crop seed required was 24.5 kg while 16.5 kg was sufficient to cover farmland designated for *teff*.

With regard to wheat, 54.4 kg wheat crop seed was sown in average which is 53% of the required wheat crop seed and 103% of wheat crop for their land designated for wheat. The amount of wheat crop seed required was 54.5 kg while 103.4 kg was over sufficient to cover farmland designated for wheat.

Survey results also showed that most of the project targeted groups (58%) received only one type of seed while 44.6% got both types of seeds.

Regarding the amount of seed crops, 76% of households were satisfied with the amount of distributed seed. Two of the major reasons why others were not satisfied about seed amount were “seed amount provided is not enough as compared to the size of the farming land” and “seed provision was not timely or came after planting window”. However, 63.7% HHs reported that they received seed timely.

This survey result was confirmed by FGD and KII results as well. Accordingly, some farmers have sown their own seed which they bought from the market. Especially, the planting window for wheat was before June 22 (*Sene* 15). The delay, as reported by KII participants, was due to conflicts in Oromiya Regional State that disturbed transport system.

**4. Result 4-** Increased production of major agricultural crops from seeds distributed to target households by 37% from the baseline as a result of the project.

The fourth indicator of the project is to increase production from seed distribution to target households by 37%. The total crop production from household survey showed that 365,521 Qt of crop produced or expected to be harvested from the current harvest season. The target by FH was 206,108 Qt. The current season actual production increased by 77% of the target Figure 5, below shows comparison of average crop production in previous and current cropping season in kg. The survey result showed that average harvest increased compared to the previous year’s crop production (See figure 5) showing the contribution made by the project is successful.

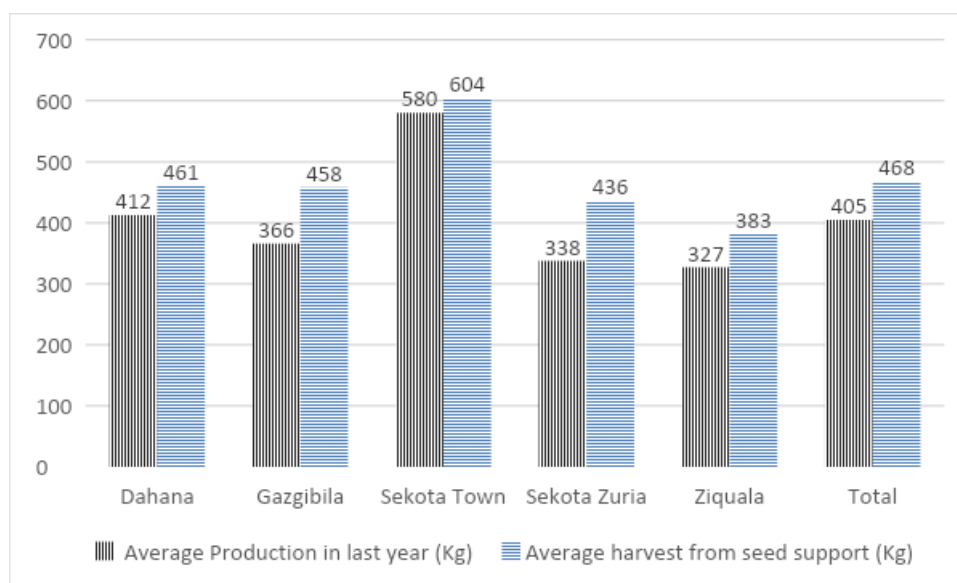


Figure 5 Previous and Current Year's Average Crop Production by Woreda  
Source: Household Survey

Project achievements from evaluation findings are compared to baseline and Target. The project has achieved its objectives. (See Table 6).

Table 6 Summary of findings vs. baseline and Target by indicators

Indicator	Baseline	Target	Evaluation Result	Change in % - compared to baseline	Achievement – compared to target
Number of months of HH food self-sufficiency as a result of seed system security programming	5	7	6.3	126%	90%
Number of people directly benefiting from seed systems/ agricultural input activities	0	Total: 144,069 Male: 74,211 Female: 69,858	Total: 144,069 Male: 74,211 Female: 69,858	100%	100%
Percentage of HHs with access to sufficient seed to plant	0	100%	58	100%	58%
Increased production of major agricultural crops from seeds distributed to target HHs by 37% from the baseline as a result of the project	150,440 Qt	206,108.82 Qt	365,521 Qt	215,081Qt	159412.18 Qt

Source: Household survey and FH Report

## 5.3 PESS Project Performance towards Evaluations Criteria

### 5.3.1 Relevance

**Relevance/Appropriateness:** How well did the proposed intervention fit to address the originally stated problem?

From KIIs FGDs with men and women seed beneficiaries, secondary data review and case studies, it was noted and confirmed that:

- The emergency seed (wheat and Teff) support was found to be relevant as the seeds provided were based on the felt needs of the target men and women beneficiaries and successfully included vulnerable/needy groups. It was also relevant as it was aligned to the national, regional, and zonal and woreda based government strategic policies and objectives of enhancing the recovery of livelihoods and building resilience of the targeted beneficiaries.
- The PESS project major interventions were clearly planned and complimented the Government's programme efforts designed to ensure food security and build resilience of targeted beneficiaries by providing seed to those who did not have seed for planting in 2020 cropping seasons.
- Although there were some complaints about the delay of seed provisions in some areas, the FGD with the men and women have shown that the beneficiaries are pleased with provided seeds as they are relevant and based on their primary felt needs.
- From FGD results, it was noted that the project performed in response directly to the key humanitarian needs and main concerns of women and men target groups that were having critical problems of accessing the seeds for 2020 planting seasons.

### **5.3.2 Effectiveness**

**Effectiveness:** Did the intervention achieve its original intended objectives? Why or why not?

Effectiveness is doing the right things, and efficiency is doing things right.

The FGD and KII discussions conducted with the men and women beneficiaries, government and FH project staff indicated that the seed provisions have contributed to the overall objectives of the program. It was responded that all the planned activities were delivered as shown in the following table 1 and 2. The project has a positive impact on changing the lives of the beneficiaries through improving their economic status and reducing dependency syndrome.

The response from KIIs and FGDs have confirmed that if PESS project interventions had not been implemented in the area, the livelihood situations of the targeted community members would have been worse than they were before. According to the secondary data/report obtained from FH the achievements were documented as shown in table 7.

Table 7 Comparison of Crop Seed Purchase Plan vs Accomplishment

Name of Crop Seed	Unit	Original Plan	Actually Procured	Reason for Variances
Sorghum (Hormat)	Quintals	4,61.84	0	The required variety was out of stock by the time the PESS PAL was received.
Wheat (Hidase Variety)	Quintals	6,450	5,006.5	Social unrest in Oromia Region hampered the purchase and transportation of 1441.5 quintals seed wheat seed from the seed source identified in Oromia Region
Teff (Kuncho for mid-lands and Cr-37 for the lowlands)	Quintals	1,796.63	2,758.7	Increased quantity to substitute the above sorghum and wheat shortfall
<b>TOTAL</b>		<b>8,708.47</b>	<b>7,765.2</b>	

Source: FH ETH PESS Semi-Annual Report Final version

### 5.3.3 Efficiency

**Efficiency:** How well the resources provided to this project were used?

As per the discussions conducted with FH implementing staff and KIIs of the relevant government offices at Zone and Woreda levels, it was observed that the project was efficient having established coordinated systems of project implementation strategies and acceptable networking with Zonal, Woreda and Kebele level Agriculture government structures.

The outputs are measurable and have contributed to support the seed gaps of the targeted communities. Although there were high needs in the area as many farmers did not have seeds to plant and not access it by their own means, the project has prioritized the most vulnerable needy ones to target the group. There was acceptable coordination between the implementing FH office and the concerned government Agriculture sector office at Zonal and Woreda levels as well with community structures at Kebele level. FH implementing members said that the project has well established budget management systems and tools. Most of the purchases of emergency seeds were done in consultation with concerned Agriculture government professionals at woreda levels. It was noted that the purchase and provisions of seeds to the target groups were implemented in a harmonized manner and augmented the government objectives without duplicating the efforts.

### 5.3.4 Impact

**Impact -** As compared to the originally stated problems, what difference did the project interventions made on the lives of the people, especially the most vulnerable?

According to responses from KIIs with the Woreda government Agriculture office and FH staff; FGDs with men and women target beneficiaries, the provision of seed had a positive impact and contributed to address the critical shortage of seeds that would have not been obtained and addressed by the targeted beneficiaries themselves. If the FH's PESS project intervention had not been implemented, most of the targeted community members would have had greater challenges of getting the required seeds of wheat and *teff* for the 2020 planting seasons. This would have again resulted in critical food shortages and could lead to food insecurity at household levels as there were no other alternatives to the targeted beneficiaries. The FGD responses have indicated that the beneficiaries would have been forced to use local seeds borrowing from other farmers and involved in crop sharing practices by contracting out their farm land to those who can afford to provide seeds. Moreover, the provision of seeds has contributed to get yields from the sown wheat and *teff* seeds although the yield was not to their expectations due to late arrivals of seeds and attack by some insects locally known as Degeza/Fintara. The seed provision is also expected to reduce critical food shortage periods.

### **5.3.5 Sustainability**

During FGD with men and women seed beneficiaries, it was noted that the participants were complaining about paying back the seeds received to the seed bank established by zone Agricultural Office as they were not informed at the outset of seed provision. Even though this could have a bearing on the sustainability of the project results, the revolving scheme linkage to potential risk reduction plan of communities is helpful and will guarantee sustainability in improved seed availability as the two seeds types are self-pollinated crops. It was also understood that PESS project has been jointly implemented with involvement of Agriculture offices at zonal and woreda level and as well community participation. It is supposed that the involvement of the Agriculture office from initial identifications of the required seed types and vulnerable target beneficiaries the project initiated practices would ensure the sustainability of the results after the phase out of the project. Cluster based farming and row planting practices gained could also help the beneficiaries to continue and sustain the experiences after the project.

### 5.3.6 Integration, synergy and complementarities

The FGD held with men and women target beneficiaries have indicated that the PESS project has properly networked and coordinated with government agriculture offices at Zone and woreda levels. The project provisions of wheat and *teff* seeds to the targeted beneficiaries were found to be complementary to the national, regional, Zonal, woreda and Kebele levels' efforts as well as to overall country's food security policies, approaches, strategies and programs. Furthermore, the provisions of seeds to targeted beneficiaries are believed to beef up government efforts to ensure food security efforts in the community.

### 5.3.7 Cross Cutting Issues

The project has strategically targeted the most vulnerable and needy targets in general and considered bring it before considered women targets in particular with seed provisions. Information gathered from FGD participants and beneficiaries list showed that the project has taken gender and inclusion into consideration.

### Summary of evaluation criteria - using Ratings

Participants of KII were asked to rate the outcomes of the project using evaluation criteria. The participants of KII were Development Agents (who have directly involved in seed distribution), Crop development experts and Early warning experts of the study Woredas (who have supported the beneficiaries with crop management, timely wedding, and pest control, postharvest handling and strengthening of beneficiary's capacity building). The information collected on the five evaluation criteria were analyzed and rated based on DAC/OECD evaluation criteria of measurements with the support of scores described under each evaluation criteria provided in the TOR of this evaluation.

The information collected from KII as well as document review are rated based on the measurement as portrayed in table -8.

Table 8 Evaluation criteria of measurements

Response Score For Evaluation	0 Unsatisfactory	1 Low	2 Good	3 Satisfactory	4 Highly Satisfactory
	Low or no visible contribution to this aspect	Some evidence of contribution to this aspect but significant improvement required	Evidence of satisfactory contribution to this aspect but improvement required	Evidence of good contribution to this aspect with some areas for improvement and change	Evidence that the contribution is strong and/or exceeding that which was expected of the project

The rates from sector offices were given by KII participants from crop management, early warning and DRR management department of agriculture office, and Kebele Development. Findings were triangulated with views from beneficiaries that were collected using FGD, case story and survey. The result was attached as a summary of evaluation criteria.

Accordingly, the participants provided a score of 4 for *Relevance* of the project, *inclusion of people with disability and gender*, and *coordination* (see figure 6). Other evaluation criteria effectiveness, efficiency, impact and sustainability were rated as three. This shows the project has evidence of good contribution with some areas for improvement and change.

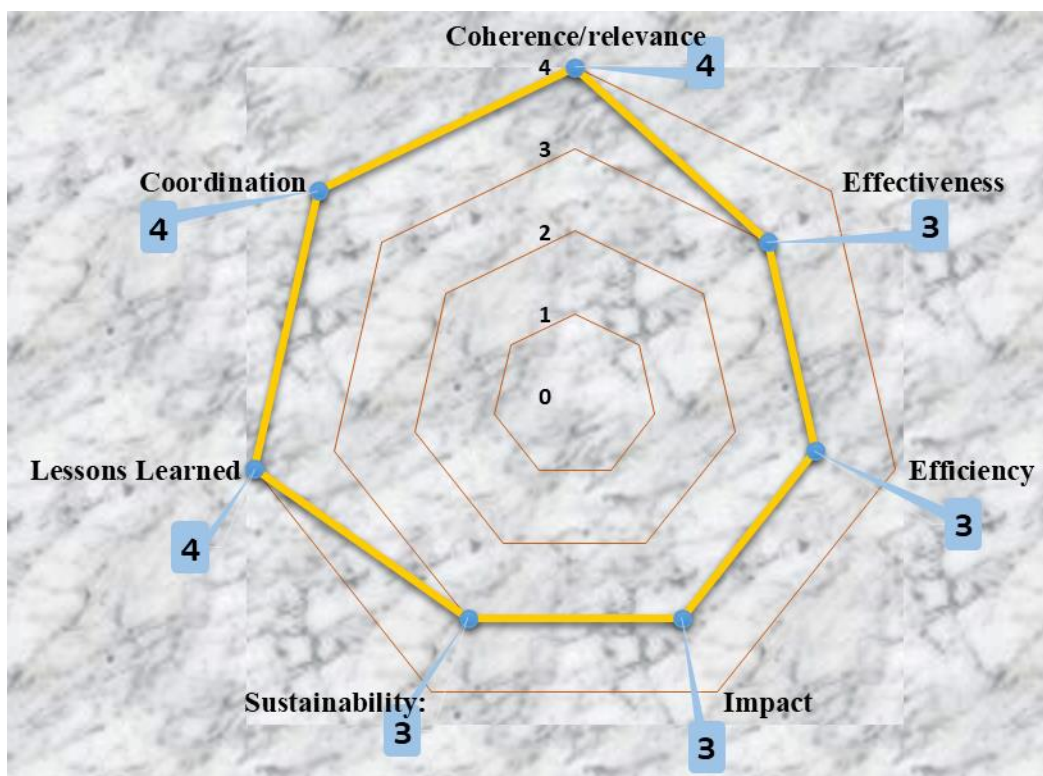


Figure 6 Scores of evaluation criteria  
Source: Household Survey

## 6. CONCLUSION AND RECOMMENDATIONS

### 6.1 Conclusion

The results of KIIs and FGDs with men and women target beneficiaries and the secondary data showed that:

- It was noted and observed that both wife and husband from one household targeted and received seeds and that has impacted addressing more eligible targets rather than providing to only one household member (both wife and husband). In addition some beneficiaries who could afford to buy or had a means of getting seed from other sources were erroneously included in the targeting process.
- It was observed that some of the FGD participants complained that the office of Agriculture had informed them of collecting the seed that is equivalent to the amount they received during seed distribution. During the FGD it was also understood that beneficiaries had not been consulted about the revolving seed scheme. It was strongly believed that beneficiaries were supposed to be asked for their consent on the scheme. However, the consultant believes that the revolving seed scheme would also be to the advantage of the farmers because the collected seed would be used during similar seed shortages that may surface in the coming cropping seasons. This is tantamount to disaster risk reduction and preparedness plan that will contribute to the strengthening of the community disaster risk reduction if properly linked.
- Almost all of the beneficiaries planted all the seeds of wheat and teff they received and some responded that they have set aside some for the next cropping seasons while some are consumed for food.
- Some of the FGD participants have confirmed that they faced a problem of mainly wheat crop poor performance due to late arrival and attack by locally known Degeza/Fintara insect and water logging following heavy rainfall after germination.
- Apart from timely getting fertilizers, some of the FGD participants have replied that they encountered some insecticides and herbicides shortage/un-availabilities.
- The participants of FGDs have confirmed that they have received the amount of seed allocated to them. FH did not have the plan of donating seed for the whole cultivable land owned by the beneficiaries. The PESS plan was to give seeds to the needy only for

0.5 hectares of land. That is *Teff* seed enough for 0.25 ha and wheat seed for 0.25 hectares of land. For those who could not get wheat due to shortage, *Teff* seed sufficient for 0.5 hectare was granted

- The FGD participants confirmed that they received seed only from PESS project and not were targeted by other sources which indicates that there are no duplications and revealed coordinated emergency seed provision approach.
- Apart from some of the FGD participant's complaints, the majority of the participants have confirmed that they received their choice of wheat and teff seeds in a timely manner and required qualities and were satisfied with the emergency seed provision. But mainly at Gaz Gibla woreda, DebreWoila Keble FGD men and women beneficiaries have complained about the quality and delivery delays.
- In general the PESS implemented by FH has greatly contributed to addressing the seed gaps and needs of the targeted men and women beneficiaries. It is expected to positively impact the food security of the target groups by improving the crop production for food and also could complement to get cash income.
- The experiences gained from the implementations of this PESS project could be used to further improve the implementation of similar future programming.
- One of the good lessons learned from the PESS project implementation is that the project has actively involved concerned government partners from the beginning and this was important for timely eligible beneficiary selection and seed delivery. In addition, joint planning and periodic coordination meetings enable timely track the progress, identify challenges, share experiences among beneficiaries and take prompt actions in a timely manner.

## **6.2 Recommendations**

Based on the responses and feedbacks of men and women FGD participants, the following recommendations are forwarded to consider for future similar program implementations:

- As the participants of FGD reflected, it is better to consider provision of diversified crop seeds such as vegetable seeds to overcome the likely risk that might happen due

to crop failure based on the proper need identifications and suitability of the crops to the target areas

- As some of the able beneficiaries who could afford to get seeds by themselves were considered to receive seeds, it is recommended to critically identify the needy groups from the initial stage and closely monitor during seed provisions/distributions.
- During FGD, it was discovered that both wife and husband received seed which needed to be critically supervised and monitored during distributions. Emergency seed provisions should be based on needs assessments and identification of proper/eligible targets.
- Appreciating the direct involvement of concerned government offices in the PESS project implementation process, it is recommended to build upon the gained experiences and enhance the proper documentation, recording of emergency seed prior and posting distribution data to improve the transparency and monitoring of the process.
- It is clear that agricultural activities require continuous technical support prior and post seed distributions such as crop pest control, land preparations, post-harvest handlings to minimize unnecessary crop yield losses. Thus as it was reflected during FGD, it is recommended that the technical support from the concerned agriculture office should be considered for similar future project implementations.
- Provision of emergency seeds should be integrated with other agricultural inputs such as fertilizers and pesticides for future similar projects to targeted poor households to minimize and avoid crop losses and improve yields to attain food security objectives.
- It is recommended that documentation of failure and best practices should be systematically recorded and documented as lessons for future decision making processes to ensure proper uses of seeds by target groups.
- As almost the majority of the FGD participants complained about late arrival of seed, it is recommended to deliver seed in a timely manner for future similar interventions to enable the beneficiaries able to plant in time and get the expected yield.

## 7. ANNEXES

### 7.1 Reference and Reviewed Documents

#### References:

- Helland, J., and Sörbö, G. M. (2014). Food Security and Social Conflict. CMI Report 2014:1. Bergen: Christian Michelsen Institute.
- Bazerghi, C., McKay, F. H., and Dunn, M. (2016). The role of food banks in addressing food insecurity: a systematic review. *J. Community Health* 41, 732–40. doi: 10.1007/s10900-015-0147-5

#### Internal Document Reviewed

- Program for Emergency Seed Support Semi-Annual Program Performance Report Submitted to USAID/BHA Washington, D.C.
- Program for Emergency Seed Support (PESS) Federal Award Number - 720FDA20GR00095 Performance Baseline Data Report September 29, 2020
- Program for Emergency Seed Support (PESS) Project Proposal
- Beneficiaries list

#### External Document Reviewed

Wag Hemira Zone Agriculture Office, Assessment of 2012/13 Crop Production

### 7.2 Tools used for data collection

#### Questionnaire

##### **FH Ethiopia OFDA Funded - Household Interview Questionnaire**

This survey is conducted to set up evaluation for the “PESS Program” funded by USAID/OFDA. We highly appreciate it if you are willing and could spend some time with us to provide information related to your crop production related issues. Your name and information provided during our discussion will be kept confidential and used for study purposes only. If you are willing, we continue otherwise stop here or anytime you feel inconvenience.

##### **I. General Information**

Q1. Name of target Woreda (Choice)

1. Abergele
2. Dahana
3. Gazgibila
4. Sahila
5. Sekota
6. Sekota Town
7. Tsagibji
8. Ziquala

Q2. Kebele Name (Choice – the list will be taken from Master Beneficiary List to mobile based data collection form – exactly same sampled Kebeles during baseline time)

1. XX
2. Etc.

Q3. Village Name (Text) -----

## II. Personal details of the interviewee

Q4. Head of Household Name (Text)

Q5. Household Head Sex

1. Male
2. Female

Q6. Age of household head (respondent) \_\_\_\_\_

Q7. Number of people living in the household including head: Total \_\_\_\_\_ Female \_\_\_\_\_ Male \_\_\_\_\_

Q8. Please ask politely what type of vulnerability the head of household has; for easily observed status, no need to ask.

1. People with disability
2. Female Headed
3. Elderly
4. Critically ill/ Chronically sick
5. Other, please specify \_\_\_\_\_

Q9. Size of hectare allotted for farming \_\_\_\_\_

### **PESS Household Seed Support and benefit out of it**

Q9. Do you acknowledge the existence of food scarcity month in your community in the last year?

1. Yes
2. No

Q10. If yes to Q9, how many months do you encounter food insufficiency in your household?  
\_\_\_\_\_

Q11. If there exist month of food scarcity, which month you are suffering the scarcity?  
(Multiple responses are possible)

1. January
2. February
3. March
4. April
5. May
6. June
7. July
8. August
9. September
10. October
11. November
12. December

Q12. Does the household access sufficient seed to plant?

1. Yes
2. No

Q13. Have you received seed support in the last 8 months?

2. Yes
2. No

Q14. If yes to Q13, how many seed crop you have received in the last 8 months \_\_\_\_\_

Q15. If yes to Q13, please list the name of the organization from where the household get the seed support? (Multiple answer is possible)

1. FHE/ PESS
2. Government
3. Others, please specify \_\_\_\_\_

Q16. If yes to Q13, how do you rate your satisfaction to the quality of the seed?

1. Satisfied
2. Neutral
3. Not satisfied

Q17. If 'Not Satisfied' to Q16, please tell some of the reasons? \_\_\_\_\_

---

Q18. If 'Yes' to Q13, did the household receive timely?

1. Yes
2. No

Q19. If yes to Q15, what type of crop seed you received (Multiple Responses are possible)?

1. Teff
2. Wheat
3. Sorghum
4. Other, please specify \_\_\_\_\_

Q20. Have you sown Teff in last year?

1. Yes
2. No

Q21. Have you sown Teff in the current year?

1. Yes
2. No

Q22. Have you sown Wheat in last year?

1. Yes
2. No

Q23. Have you sown Wheat in the current year?

1. Yes
2. No

Q24. If Yes to Q21, amount of crops seed sown and requirement in the last year cropping seasons in the project areas?

Q24.1 – Teff sown in KG \_\_\_\_\_

Q24.2 – Teff crop seed requirement in KG \_\_\_\_\_

Q24.3 – How much Teff seed/ Kgs is sufficient to cover your crop land designated for Teff \_\_\_\_\_

Q25. If Yes to Q23, amount of crops seed sown and requirement in 2020 cropping seasons in the project areas?

Q25.1 – Wheat sown in KG \_\_\_\_\_

Q25.2 – Wheat crop seed requirement in KG \_\_\_\_\_

Q25.3 – How much Wheat seed/ Kgs is sufficient to cover your crop land designated for Wheat \_\_\_\_\_

Q26. Do you expect the household have food self-sufficiency months in the area based on the current harvest?

1. Yes
2. No

Q27. If Yes to Q26, which months you expect as food self-sufficient (multiple responses are possible)?

1. January
2. February
3. March
4. April
5. May
6. June
7. July
8. August
9. September
10. October
11. November
12. December

Q28. For how many months you expect the harvested Teff can feed your family sufficiently?  
\_\_\_\_\_

Q29. How many quintals of harvest you expect from Teff seed support in the coming months of harvest? \_\_\_\_\_

Q30. For how many months you expect the harvested Wheat harvest can feed your family sufficiently? \_\_\_\_\_

Q31. How many quintals of harvest you expect from Wheat seed support in the coming months of harvest? \_\_\_\_\_

Q32. Please list of anticipated yield of months of FSS (Multiple responses are possible).

1. January
2. February
3. March
4. April
5. May
6. June
7. July
8. August
9. September
10. October
11. November
12. December

Q33. How much Teff /Qts/ you produced from the seeds sown last year. \_\_\_\_\_

Q34. How much Wheat /Qts/ you produced from the seeds sown last year. \_\_\_\_\_

#### **Household participation and knowledge**

Q35. Have you heard about Disaster Risk Reduction?

1. Yes
2. No
3. Don't know

Q36. Have you heard about Community Managed Disaster Risk Reduction (CMDRR)?

1. Yes
2. No
3. Don't Know

Q37. If 'Yes' to Q36, are you or any from your household member CMDRR committee?

1. Yes
2. No

Q38. Are there any ways the household get early warning information?

1. Yes
2. No

Q39. If 'Yes' to Q38, how often do you get the information?

1. Weekly
2. Monthly
3. Quarterly
4. Semi Annually
5. Annually

Q40. If 'Yes' to Q38, from whom the household usually receives early warning information?

1. FHE
2. Agriculture Office
3. CMDRR Committee
4. Other, please specify

Q41. What benefits your household and the community in general benefit out of PESS?  
\_\_\_\_\_

Q42. What areas do you suggest PESS to improve?  
\_\_\_\_\_

Q43. If you are allowed to tell one thing best of PESS, what would you say?  
\_\_\_\_\_

Thank you for your time and cooperation

Enumerator name \_\_\_\_\_

Supervisor name \_\_\_\_\_

GPS Location \_\_\_\_\_

### 3.3 Guiding Questions for FGD - Guiding Checklists of FGD Group: PESS Project

Beneficiaries (Men and women)

Zone: \_\_\_\_\_

Woreda: \_\_\_\_\_

Kebele: \_\_\_\_\_

Date: \_\_\_\_\_

Time: \_\_\_\_\_

Data Collected by: \_\_\_\_\_

No	Name of FGD Participants	sex	Representation	Contact address
1				
2				
3				
4				
5				

- 1) Do you know about the PESS project implemented by FHE? Are you PESS project beneficiaries? 1. Yes; 2. No;
- 2) If yes, what do you know about PESS projects?
- 3) When the PESS Project was started its activities in this kebele?
- 4) Did you participate in the identification and selection of eligible beneficiaries for seed distribution and design of the project?
- 5) How do you evaluate PESS project support in your kebele? Was the support according to your priority and need of the target groups?
- 6) How did you evaluate the implementation process compared to other interventions that you might know?
- 7) After PESS project support did you observe changes and improvements in target groups' food security situations using improved seeds or remains the same?
- 8) If improved, how was it improved? What are the major changes like increase in yield, reduced food insecurity periods?
- 9) Have you received any training/or participated in emergency seed distribution mechanisms and related agricultural training? If yes, what were these? Were they helpful?
- 10) How was the quality of the emergency seed distributed to beneficiaries?
- 11) Were eligible women targets considered and participated in accessing emergency seed distribution by the FHE project?

### 3.4 Guiding Questions – KII – Guiding Questions – for Stakeholders (DRR, Head of Agriculture Office at Kebele, Woreda and Zone - Projects staff)

Evaluation Criteria & Guiding Questions	Rating ( 0 – low to 4 – high)	Remarks
<b>Coherence/relevance:</b>		
<ul style="list-style-type: none"> <li>▪ How well did the proposed intervention fit to address the originally stated problem?</li> <li>▪ To what extent has PESS met the outcome level indicators and is on track towards the program goal?</li> <li>▪ To what extent have gender mainstreaming and support to the most vulnerable groups been embedded in the project interventions?</li> </ul>		
<b>1. Effectiveness:</b> To what extent did the project achieve its objectives (Outcomes and outputs)?		
<ul style="list-style-type: none"> <li>▪ Has the intervention achieved its original intended objectives? Why or why not? Were any unanticipated results identified? To what extent has the PESS project been implemented in a timely manner and how could this improve?</li> </ul>		
<b>Efficiency</b> - Were the PESS project support cost-efficient?		
<ul style="list-style-type: none"> <li>▪ How well the resources provided to the project were used?</li> <li>▪ Were the seeds distributed efficiently?</li> <li>▪ To what extent did the assistance address the most urgent needs, with regards to quality, quantity, timeliness and seeds of choice?</li> <li>▪ To what extent were the most vulnerable households reached?</li> <li>▪ What is the perception of the beneficiaries of the intervention?</li> <li>▪ What were the key factors contributing to or hindering /obstructing project efficiency?</li> <li>▪ How was the project budget utilized?</li> </ul>		
<b>Impact</b>		
<ul style="list-style-type: none"> <li>▪ As compared to the originally stated problems what difference did the project make on the lives of the people, especially the most vulnerable</li> <li>▪ What changes have the project brought to the target community that received seeds? Indicate both positive and negative changes? And what were the key factors behind these changes?</li> <li>▪ To what extent does the PESS project improve the livelihoods and food security situation of target households in particular and communities at large? Has the FHE emergency seed response successfully contributed to addressing food and income needs of the targeted population for the coming years?</li> </ul>		
<b>Sustainability:</b>		
<ul style="list-style-type: none"> <li>▪ To what extent has the PESS contributed to improving local capacity?</li> <li>▪ To what extent has the project built partnerships?</li> <li>▪ To what extent has the project created ownership among stakeholders, government and beneficiaries?</li> <li>▪ To what extent will the project results and initiatives continue after the project is phased out? Has a proper exit strategy been in place?</li> </ul>		
<b>Lessons Learned</b>		
<ul style="list-style-type: none"> <li>▪ Has the Project been implemented in cooperation with other donors and/or national/local authorities? To what extent has the Project been in line with the plans of these authorities?</li> <li>▪ Please give a brief account of how the Project has safeguarded the following cross-cutting issues:               <ul style="list-style-type: none"> <li>▪ o Inclusion of people with disabilities</li> <li>▪ o Participation of women and gender equality</li> </ul> </li> </ul>		

<ul style="list-style-type: none"> <li>Will it be possible to sustain and strengthen the achieved Project results after the completion of the support period?</li> <li>What are the most important lessons learned in the Project so far? Should any parts of the Project be altered or improved in a possible new agreement period? Please describe and explain. Please also reflect on deviations and experiences during the Project period.</li> <li>Reflect on lessons learned throughout the Project period (ques. For Project staff)</li> </ul>		
<b>Coordination</b>		
<ul style="list-style-type: none"> <li>How effectively was the PESS project activities coordinated with government programs in light of emergency seed distribution?</li> <li>How effectively was the involvement of the concerned government office in the whole seed distribution process?</li> <li>Has the emergency seed interventions integrated with other agricultural inputs provisions such as improved crop management, timely weeding, and pest control, postharvest handling and strengthening of beneficiary's capacity building?</li> </ul>		

### 3.5 Case Study/Story of Change Template

Purpose of the case story: the objective of the case will be to provide a concrete and **personal** example of project impact.  
Your focus should be at impact/**outcome level**. Take time to take appropriate **photos** for your story.  
Minimum 2 pictures of target seed beneficiaries per sample woreda  
Whenever you take a picture, don't forget to have written & signed **consent** with the interviewees to use the picture in public Medias.

#### 1. Background: *Please provide basic information about the interviewee(s)*

Name(s) :	Age: _____
Gender:	Family size: :_____
	Beneficiary of: Emergency Seed
	Beneficiary Code: If any

Location :  
Region: Amhara  
Zone Wag Himra  
Woreda: \_\_\_\_\_  
Kebele: \_\_\_\_\_  
Village/Got: \_\_\_\_\_

#### 2. Collect personal data for the story; *In this section, you are expected to explain the context of the beneficiary before project intervention, the contribution of the project and the real changes happened*

**Problem overview:** *This is about explaining in brief the context including, family situation, where he/she lives, her/his life, difficulties faced, etc.*

**Changes:** *What happened to the project target groups; how did he/she become involved with the programs/projects? How have things changed/improved? If things haven't improved, what do they think needs to be done to improve things?*

**Add quotes:** For the quotes, think carefully about asking for comments that are relevant to the situation and project. You can note the quote in the local language and translate it later

4. Wider Context/*projects summary and background information. This is the space to present the story in the context of the project that the interviewee has been involved in.*

5. Please create different short key messages about this story of change  
*Think about short key messages or key outstanding fact that explains why and how this household/individual life has been changed through their involvement in projects or interventions*

#### 6. Story of Change reference information

Interviewer/ writer:

Photographer:

Date:

Consent from interviewee

Yes/No

### 7.3 LISTS OF PARTICIPANTS OF FGD WAG HIMRA ZONE

No	Woreda	Name of Keble, Men & Women Groups	
1	SokotaZuria	<b>1.1 Lay Saida</b>	
		<b>Men Group</b>	<b>Women Group</b>
		1.1.1 Rev. TasewAlemu	1.1.1 TwuresBeryalew
		1.1.2 BereAsfaw	1.1.2 BeynaTegabu
		1.1.3 Belay Alemu	1.1.3 MuluZewde
		1.1.4 SetotawBere	1.1.4 ZenebuEmegn
		1.1.5 SeyumeMekonnen	1.1.5 AregashCherqos
		1.1.6 Zwdu Belay	1.1.6 AbayehuGebu
		1.1.7 BeyeHailu	1.1.7 SemegnDesalegn
		1.1.8 AbebawKassa	1.1.8 MebrateWagnew
	1.1.9 DessieGelaye	1.1.9 AberuAlemu	
2	Dehana	<b>2.1 Gakiw</b>	
		<b>Men Group</b>	<b>Women Group</b>
		2.1.1 Amare Endalew	2.1.1 AyalMamo
		2.1.2 KassaAbuye	2.1.2 TegegicheBeyene
		2.1.3 MebratDeeie	2.1.3 KirosMamo
		2.1.4 ShambelBmirew	2.1.4 BirituTsegaye
		2.1.5 AbebawKefyalew	2.1.5 Mama Debesaw
		2.1.6 AbebeMeles	2.1.6 AsegedAsmamaw
		2.1.7 AtaluTsehaye	2.1.7 TamralechBeyene
		2.1.8 GeteeEmiwodeh	2.1.8 DessitilGeze
		2.1.9 Alemnesh Belay	
2	Dehana	<b>2.2 Chila</b>	
		<b>Men Group</b>	<b>Women Group</b>
		2.2.1 Rev. TageruMekonnen	2.2.1 AbebuMelash
		2.2.2 DebesawFantaye	2.2.2 Mulu Haile
		2.2.3 TeshomeWorku	2.2.3 KidistMulu
		2.2.4 GetyawiaAlemu	2.2.4 AbebaTsfaw
		2.2.5 MitikWodaj	2.2.5 Mulu Belay
		2.2.6 RE. CheroqosZewdu	
		2.2.7 KefyalewWorku	
		2.2.8 GirmaAfte	
	2.2.9 SefewTadege		
3	GazGibla	<b>3.1 DebreWoila</b>	
		<b>Men Group</b>	<b>Women Group</b>
		3.1.1 ZerfaGuwangul	3.1.1 AsmaruTebeje
		3.1.2 AbeneSisay	3.1.2 WeyzerAlemu
		3.1.3 ZerfuAzezew	3.1.3 YeshanbeAtena
		3.1.4 ZewduWoldu	3.1.4 AyalneshAsnaqe
		3.1.5 EndalewSisay	3.1.5 TsehayWodaj
		3.1.6 KassaNeguse	
		3.1.7 Samuel Beze	
		3.1.8 ZerfuAdane	
	3.1.9 Meles Baharu		

## 7.4 Additional Case Stories

### Case study two - Generating Income from the Proceeds of a Seed Project.

For villagers in Gakew kebele of Dehana Woreda, access to seed, a particularly improved seed is so critical that it determines the ability of the community to cope up with lack of seeds and the resultant effects of food insecurity and lower productivity in agricultural production. Due to lack of extensive arable land, farmers in Gakew village had to operate their farming practices on a very small plot of land.

Seye Emagnu, a female of 50 who lived in Narka Dimu village of Dehana woreda for 9 years is living with her daughter Mulu Tafache of 13 years and female at grade 8. Her husband Azexe Asfaw 40 is a soldier on military assignment in Metema on the Ethio-Sudanese border and sends home a small amount of remittance which is barely enough to sustain the family with enough food and other household needs.

Seye told the writer of this story that Food for the Hungry Ethiopia selected her as a beneficiary in the seed support project that operated in her village. The project provided her with 37.5 kg of improved wheat seed as well as 6.25 kgs of teff seed which she planted on her 0.25 hectares of land over the previous farming season.

Speaking of her harvest from her plot of land, Seye said, *“Even if there was a problem related to water logging on the fields I have managed to harvest 2.5 quintals of wheat. And 2.5 quintals of teff which I hope would last us for the coming five months,”*

To supplement her income from harvest, Seye also started to sell tella which is a home brewed traditional beer. She said *“I sell a can of tella for 5 Birr twice a week with a weekly income of 60 to 70 Birr earning some 300 Birr per month.”*

She added that she has already reserved enough seed for the next farming season and may not need further support on seed as she can continue to be self-sufficient in seeds.

At the end of our conversation, she wasted no time than the project launched by Food for the Hungry in her community. She said, *“I really thank the organizers of the project for the support they provided us with seeds free of charge. This has enabled us not to worry about grains seed for the coming farming season.”*

The project has enabled female headed families to support their families by benefiting from the seed project which was so useful given the fact that had it not been for the support they got from the project they would have been forced to take loans only to pay back even if the harvest was poor by local standards.

### Case study Three - Improved Seeds for better livelihood

Reverend Gebrekirkos 60 and his wife live in Dehana woreda in Chilla village with their four children including Gashew Gebrekirkos 20 and in grade 12, Fekadu Gebrekirkos 17 and grade six but now quitted school in spite of the pressure from his father, Digisay Alamerew, female age 12 and 8<sup>th</sup> grade and Biruke Gebrekirkos, male age 11 and grade six.

Over the last 8 months of the project life time, Almerew was provided with 37.5 kg of wheat and 6.25 kg of teff seed. He had one hectare of land. The family managed to harvest 2.5 quintals of wheat and 50kg of teff. Keis Geebre Kirkos told the writer about the challenge that he faced due to waterlogging mentioned by other farmers in his area.

The market price for the amount of wheat seed he has received is about Birr 800 while the amount of teff he received costs about 220 Birr. This has enabled Keis Gebrekristos to recover more than 1000 Birr as the Food for the Hungry Project has provided him with free improved seeds.

Reverend Gebrekristos said “ I have reserved 50kg of wheat and 10kg of teff for seed in the next farming season and I may not need to get more seed support for the next season because I can be self-sufficient in seed for my farm. ”.

He had another means of income besides the seed support he has received. He said, “*I received three tranches of loan from the local savings and credit association, Birr 10,000, 20,000 and 24,000 Birr respectively*”.

The grant he received from the seed project was not actually the major source of family income as he has managed to repay his loans and also. By local standards, he is better off than the rest of the farmers in the area and the seed project had little impact on his livelihood because he was generating income from other sources as well.

It seems that this is an example of error in beneficiary selection for the project which needs to be corrected on future projects.

#### **Case study Four - Seed Support for Food Security**

Over the last 8 months, FH Ethiopia launched a seed support program in 8 woredas of Wag Himra Zone of Amhara Regional State with the objective of increasing the productivity and resilience of farmers in various districts of the zone.

Dereje Yilma, 30 and his wife Mesaway Wagnew 20 live in Chilla town of Dehan District with his wife and three children including Markos Dereje, male and age 12 in grade six, Dawit Dereje, 9 and in grade 5, Fiker Derje.

Dereje was one of the beneficiaries in the seed project who received 37.5kg of wheat seed and 6.25kg of teff seed. Unlike other farmers in his area, had no land of his own but rented a piece of land for Birr 3000 each harvest year. He managed to get one and half quintals of teff but failed on wheat production. He managed to save Birr 1000 that he could have released for seed but he said the project provided him with seed free of charge.

Speaking to FH Ethiopia on the importance he has attached to the seed project, Dereje said, “*If I wanted to buy the seeds on the open market, I could have expended more than Birr 995. On the other hand, if I had to take seed loan in kind from the government, I would have repaid 50kg with 2,3% interest of wheat after borrowing 40kg. unfortunately I was not successful in harvesting wheat because of water logging on the field and due to the type of seed that I think*

*was not fit for the ecology of our area. There is a wrong choice in seed selection and this should be corrected in the next round. ”.*

Dereje borrowed money from Amhara Saving and Credit Institute in three rounds, which is Birr 10, 000, 15,000 and 20,000 with 19% interest and managed to build his own house on 200 square meters of land provided to him by the local administration.

He added, *“I also work on fattening bulls and beekeeping and earn some money from daily labor to supplement to my financial needs. I need to ask the local government for farmland as I cannot continue to pay a lot of money every year for leasing a farmland”*

Speaking of his future plan, Dereje said *“I want to expand bee keeping business if the government would provide him with a piece of land.”*

### **Case Study Five - Livelihood Support through seed project**

Misganaw, 52 and his wife Aregash Aynnew 32 live in Chilla kebele of Gakew district with their *children* Hailu Misganaw male 20 and 10<sup>th</sup> grade, Tilahune Misganaw male 15 and fourth grade and Mekdes Dereje 11, female and grade 5.

This family, just like the target group in the area, have benefitted from the distribution of improved seeds.

Misganaw and his family received 37.5 kg of wheat and 6.5kg of teff seed. The family does not possess their own farmland but had to rent land from another farmer with the agreement in the form of sharecropping. In this harvest season they shared four and half quintals of wheat and also shared one quintal of teff each.

Speaking of the income he got from the byproducts of the harvest as an additional income, Yilma said, *“I managed to sell the byproduct of the harvest which I do not need to share to the amount of 3500. I also gain a lot of money from fattening 3 oxen every three month and each ox is sold from Birr 18 thousand to 24 thousand on the open market.”*

Here it is difficult to separately assess the impact brought by the seed support project because this family is getting far more incomes from other sources like fattening ox.

Again, it is very important to select the poorest of the poor from among the target population to see the real impact the seed support product has helped to change the livelihood of needy families.

### **Case Study Six - Promoting Food Security through seed support project**

Zerfu Endale 38 and his wife Teweres Bayou live in Gaz Jibla woreda in Debre Woina kebele with three children of their own including Fasika Zerfu, male 18 and 12<sup>th</sup> grade, Nigus Zerfu, 12 male, 7<sup>th</sup> grade, Habtamu Zerfu, male 8 and first grade, Netsanet Zerfu, female and 2 years old.

The family of Mr. Zerfu received the standard ration of seed support which is 37.5kg of wheat worth Birr 810 at market price and 6.25 kg of teff seed sown on 0.25 hectares of land. Zerfu

told the writer of this story saying, *“I managed to harvest 3 quintals of wheat and have set aside enough amounts of grain seed for the next farming season so that I do not need to wait upon the project to provide me with seeds”*

He plans to harvest more wheat, barley, beans and other legumes on his 0.25 hectares of land after the grain is harvested in the future.

He added *“with the wheat we have harvested, our children were able to eat good bread and also porridge to improve their national status”*

Apart from grain production, Zerfu and his family are also engaged in small scale irrigation for ensuring additional income for their family and also as a supplement to the nutrition for the kids in the family.

Speaking of his irrigation, Zerfu told the reporter, *“I harvest potatoes, garlic, tomatoes, and pepper as a supplement to family nutrition.”*

It appears that Zerfu has realized the importance of the seed distribution program from what he has commented on the project, He said, *“we are all thankful for the support we received with seeds from the project and we will try to see more improvement in our livelihood due to the project.”*

### **Case Study Seven - Seed support for needy women**

Asmaru Tebeje 60 and her daughter Aster Jangaw live in Gaz Jibla woreda, Debre Woinal Kebele. Her husband passed away several years back. She received the standard ration of seed support which is 37.5kg of wheat worth Birr 810 at market price and 6.25 kg of teff seed sown on 0.25 hectares of land. Apart from grain production, Asmaru and his family are also engaged in small scale irrigation for ensuring additional and also as a supplement to the nutrition.

Although this project is entirely meant for relief support in areas with erratic rainfall and rugged terrain, it has helped to build the capacity of families to produce food which could last for food stress season. Female headed families shoulder the major responsibility of managing family life and with such support.

Asmaru said *“The support we got from the project right at our community is very important because the seeds are very good and we receive them free of charge without worrying to pay back.”*

